

A collage of various industrial conveyor systems and material handling equipment. The background features a white surface with large, sweeping red and white curved stripes. The equipment includes: a blue and yellow roller conveyor with a motor; a blue and orange circular roller conveyor; a long, straight roller conveyor with a red frame; a long, straight roller conveyor with a yellow frame; a curved roller conveyor; a tall yellow and grey vertical conveyor system; a blue and white roller conveyor with a motor; and a blue and white inclined conveyor system. The text 'le' and 'tions' is visible on the left side of the image.



SOLUTIONS IN ACTION





Standard Products

Package & Pallet Handling



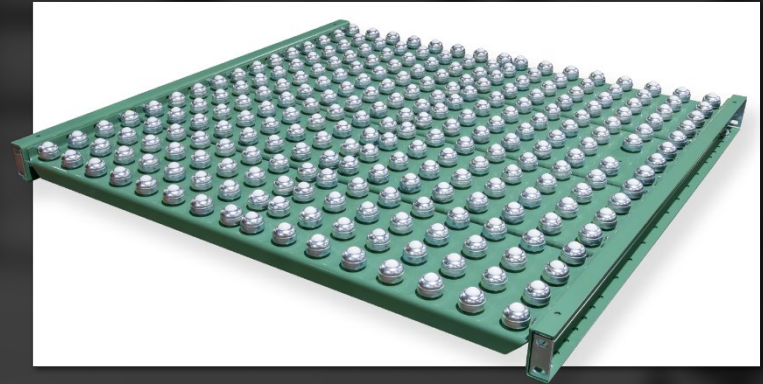


# Gravity Conveyors

Light Galvanized Wheel Conveyors –  
Heavy-Duty Structural w/ Steel Rollers

Curves, Spurs, Herringbone,  
& Flexible

Ball Transfers



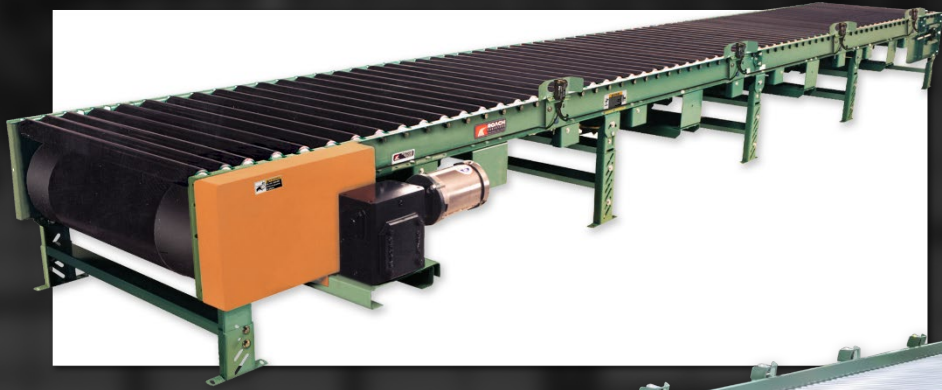


# Smart Zone® Accumulation

Zero Pressure Zone Accumulation

Smart Zone® Photo Sensors

Belt Driven, Chain Driven,  
Line Shaft, & Powered Roller



SMART ZONE



# Belt Conveyors

- Slider & Roller Bed Options

- Belt Widths 6"-57"

- Heavy-Duty units moving up to 12,000lbs



# Belt Driven Live Roller

- Optimally designed for transfers & side loading/unloading
- Positive belt drive provides enhanced control & grip, reducing slippage
- Efficient | Durable | Minimal Downtime





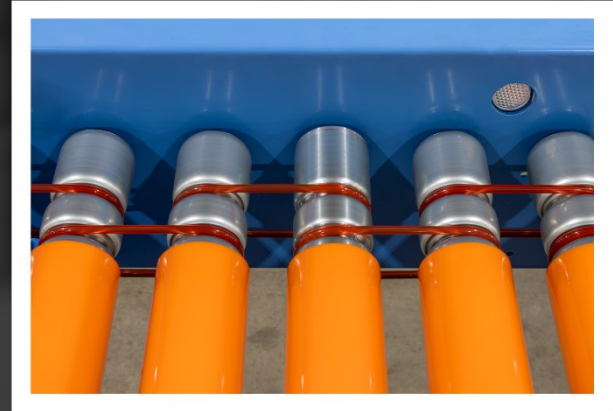
# Chain Driven Live Roller

- High durability in harsh environments
- Consistent speed & torque with irregular or uneven loads
- Heavy-duty units capable of moving up to 60,000lbs



# Powered Roller

- 24V Motor Driven Roller
- Smart Zone® Zero Pressure Accumulation Available
- Poly-V band options for increased torque at higher speeds



# Chain Drag

- Heavy-Duty Loads & Bulk Materials
- Pallets & Large Rigid Containers
- Capable of moving up to 12,000lbs





# Plastic Belt Conveyors

— Inline & Transverse Roller Top

— Curves & Incline

— Heavy-Duty Belting Available



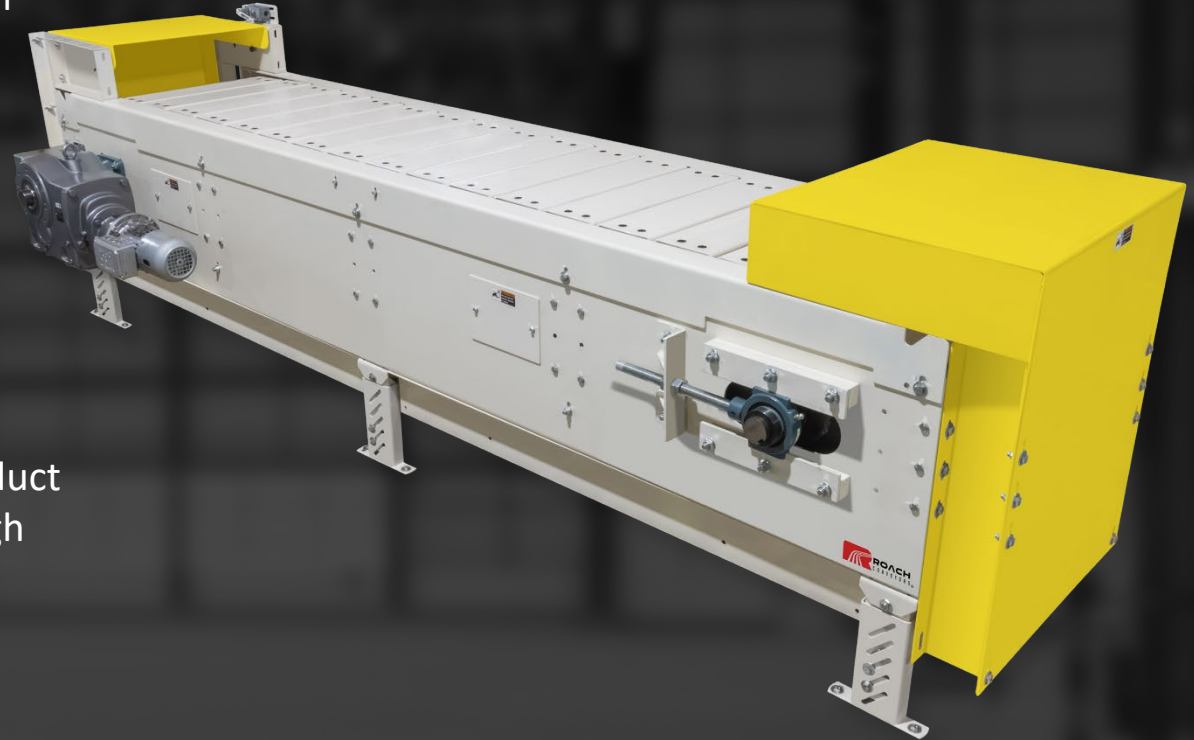
# Parts Conveyor

- Commonly used to collect & transport scrap materials for disposal or recycling.
- Cleated belts available in nitrile, wire mesh, & plastic.
- Portable



# Slat Conveyor

- Heavy-duty, moves unstable, irregular shaped objects & those with problematic bottom surfaces.
- Common in appliance & furniture handling.
- Assembly line operations where product moves at a slow rate of speed through several operator workstations.



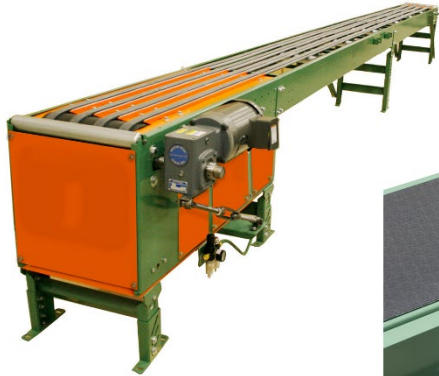


CT280

Chain Drag w Positive Lift Transfer

Narrow Belt Sorter

Pivoting Belt Sorter



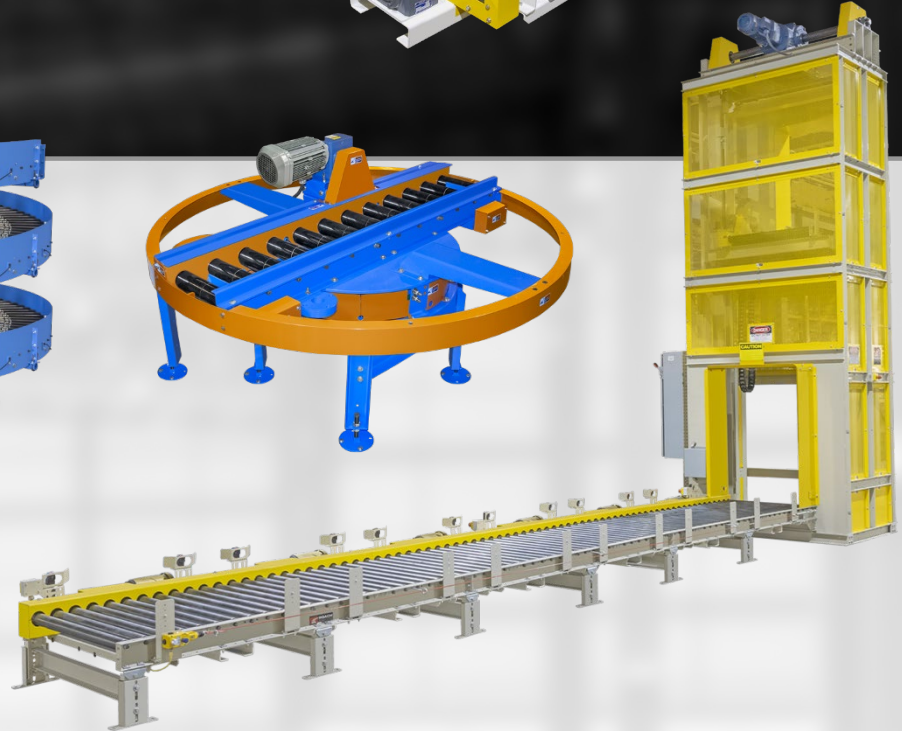
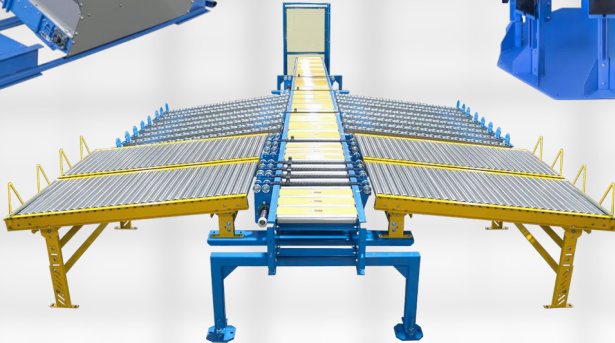
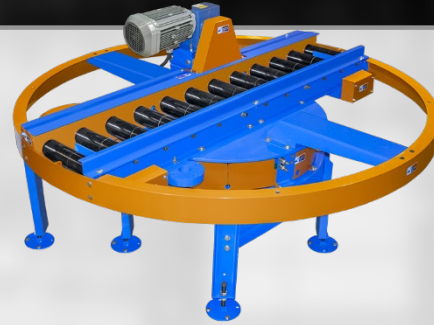
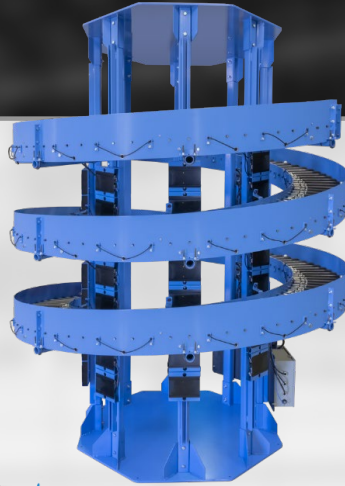
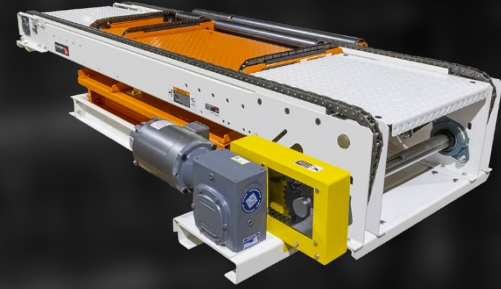
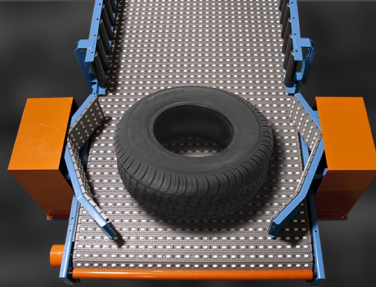
**UP TO 75 SORTS  
PER MINUTE**





Special Products

Custom Solutions  
for Unique Applications



# Glass & Solar Panels

- Polyurethane banded rollers provide minimal points of contact
- Vertical Glass Accumulation
- Non-marking grid turntables & special transfers





# Heavy Duty Conveyors

Heavy Duty CDLR conveyors capable of moving 60,000 lbs of sheet metal

12,000 lb live load chain transfers & belt conveyors

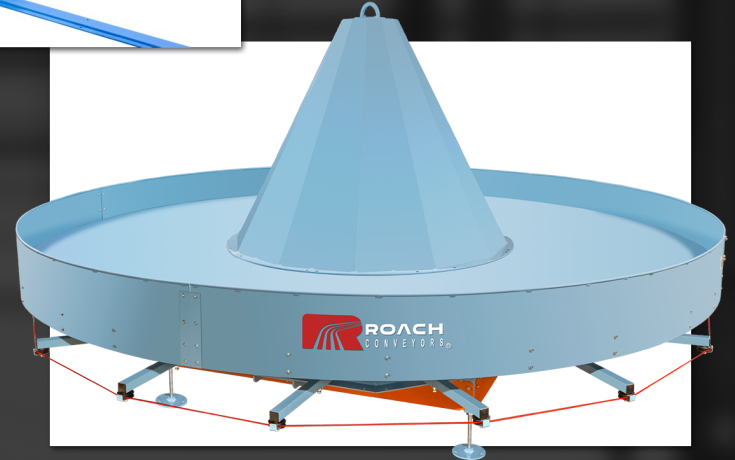


# Laundry Conveyors

— Laundry Transfer Shuttle Carts

— Washer & Dryer Receiving  
& Unloading

— Accumulating Laundry Carousels



# Tabletop Chain Conveyors

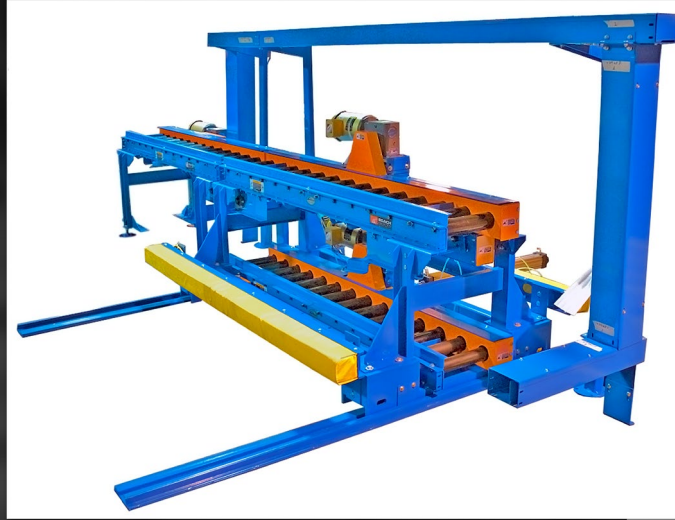
- Move bottles & cans, personal care, household, & paper products
- High Efficiency | Low Pressure
- Metal & Plastic Belts
- Curves & Inclines





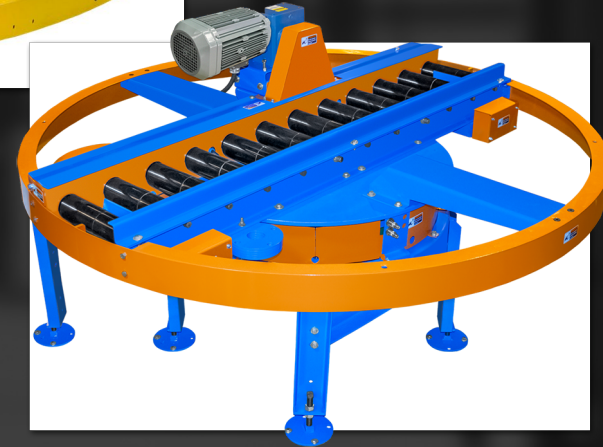
# Transfer Carts

- Heavy Duty carts travel along tracking guide via pneumatic pistons
- Top mounted CDLR, powered roller, belt & turntable modules with pneumatic lifts
- Pneumatic Stops, Safety Bumpers & E-Stops



# Turntables

- Heavy Duty turntables capable of moving 5,000 lb pallets
- Top mounted CDLR, chain drag, powered roller, belt, modules
- Non-marking cross & grid tables



# Product Orientation Conveyors

- Heavy Duty 90° Rotating Upenders
- Non-Marking 180° Rollovers
- Heavy Duty Pneumatic Downenders





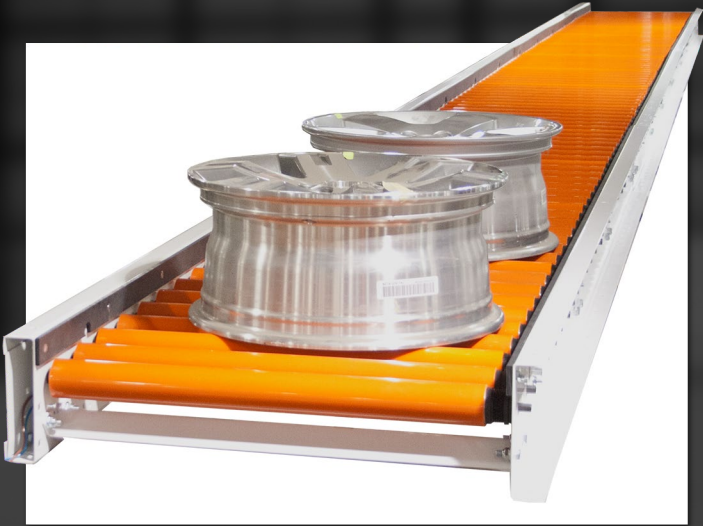
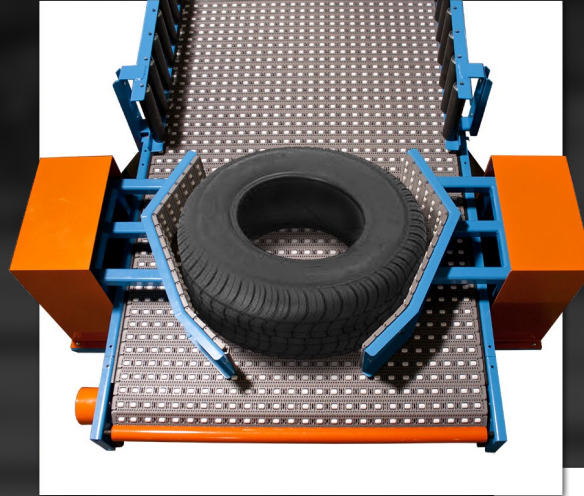
# Vertical Lift Conveyors

- Heavy Duty I-beam construction lifting up to 4,000 lbs
- Reciprocating, Continuous, & Reversible Applications
- C-Flow & Z-Flow



# Wheel & Tire Handling

- Non-marking applications with urethane covers
- High Temperature 700° Chain Drag
- Tire centering for robot transfer



# Stops, Barriers, & Walkovers

Personnel & equipment barriers with infeed & discharge opening

Walkovers & Crossovers

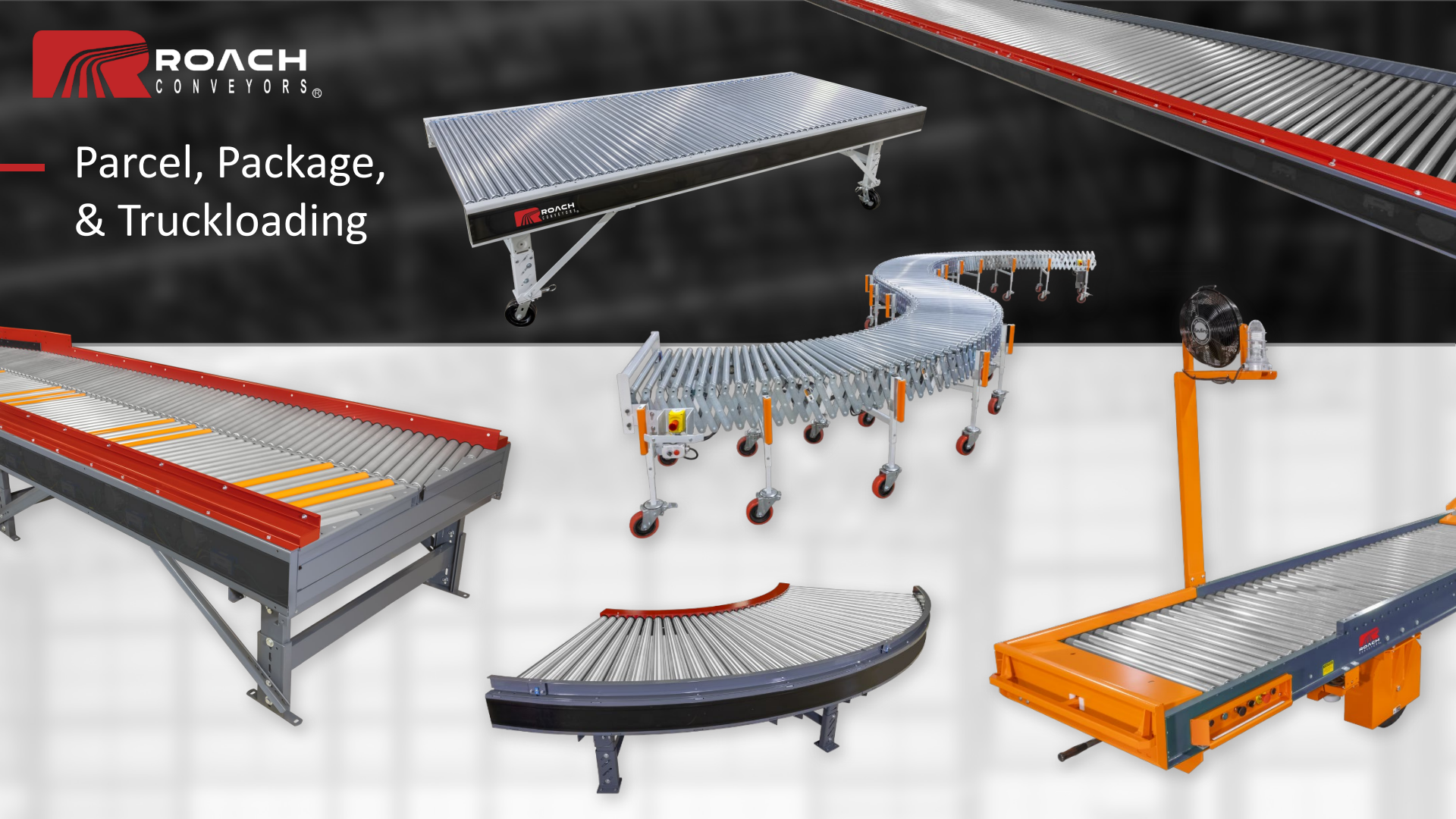
Tubular Mezzanine & Conveyor Support Structure







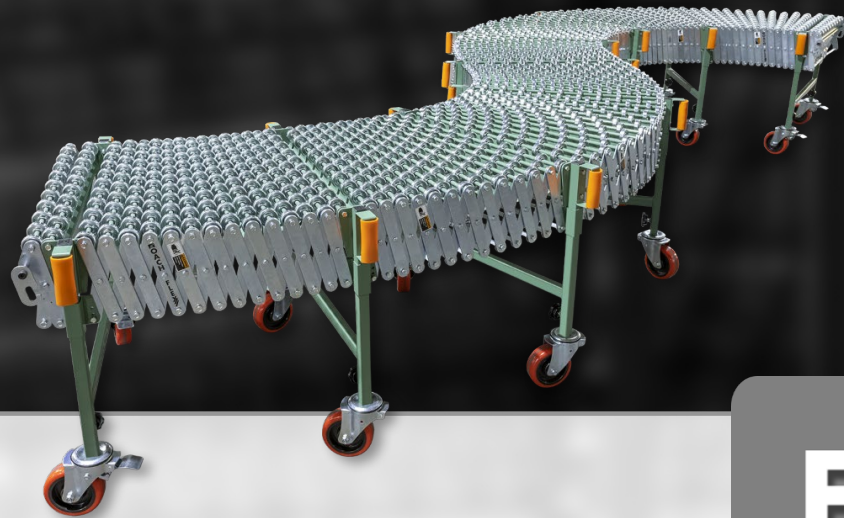
# Parcel, Package, & Truckloading



## TL2 | TWO STAGE TRUCKLOADER

- 10" Structural Steel Construction
- Built to Withstand Loading Docks
- Live Loads up to 3,000 lbs
- Over 10,000 units in service today
- Virtually Maintenance Free





- Excellent Tracking & Accumulation
- 100 lbs/Zone Capacity
- 24" & 30" Widths
- E-stops & End Stop Sensors

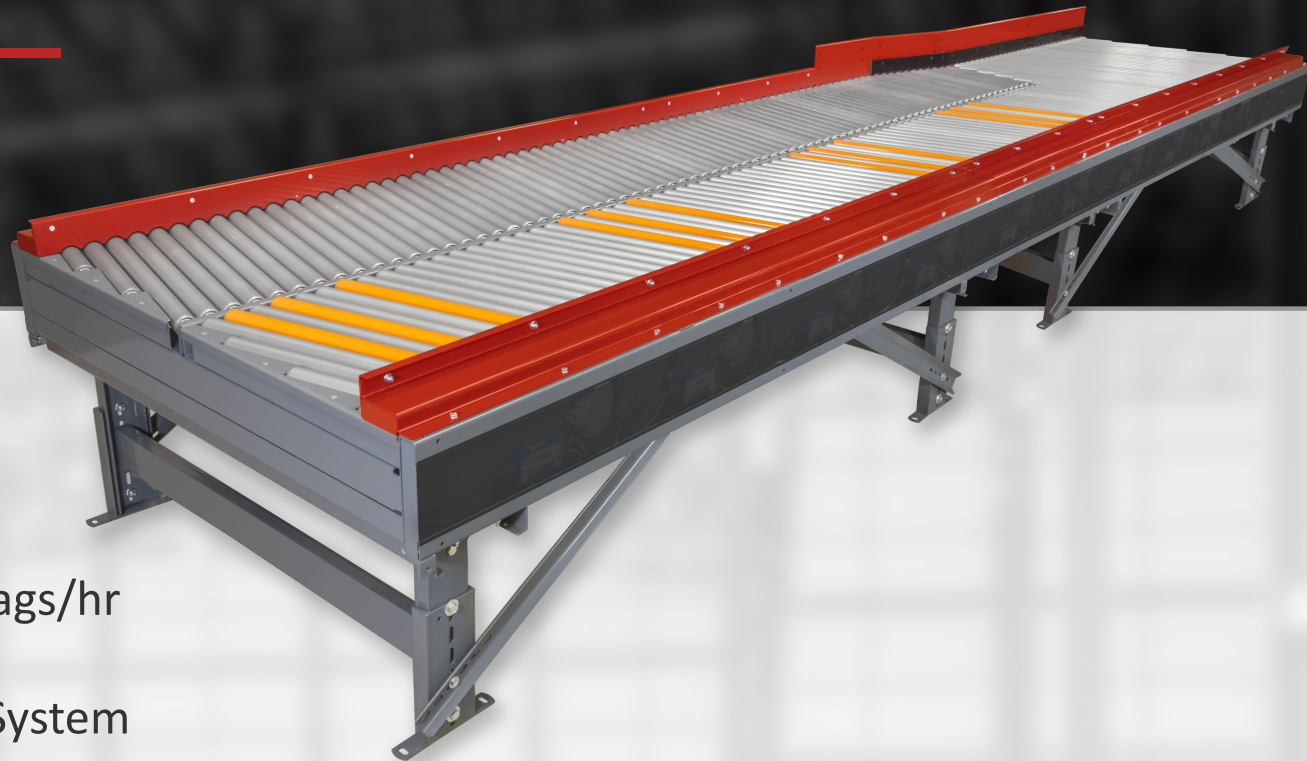
- Heavy Duty - 350 lbs/ft Capacity
- 18", 24", & 30" Widths
- Adjustable Height
- 6" Heavy Duty Casters

**FLEX**



## GATOR SINGULATOR

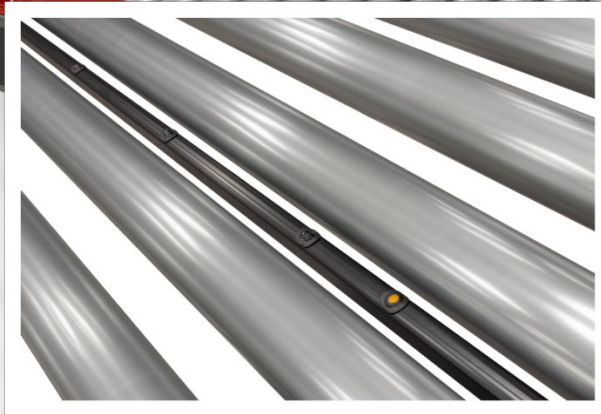
- Parcel & Pre-sorting
- 450 ft/m
- 6,500 packages & polybags/hr
- 24vdc Brushless Motor System
- Low Decibel Motors





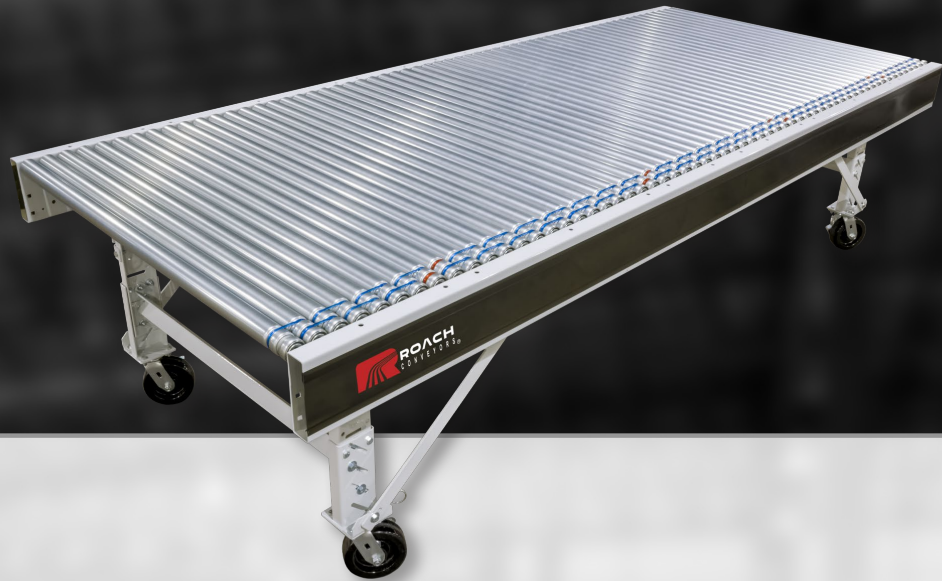
# 796 MDZ MOTOR DRIVEN ZONE ACCUMULATOR

- 35-120 ft/m
- 70 lbs. per Zone Capacity
- 24vdc Brushless Motor System
- Simple, Efficient, & Low Maintenance
- Lightbar Monitored Accumulation Zones



## MCS | MODULAR CONNECT SYSTEM 3.0

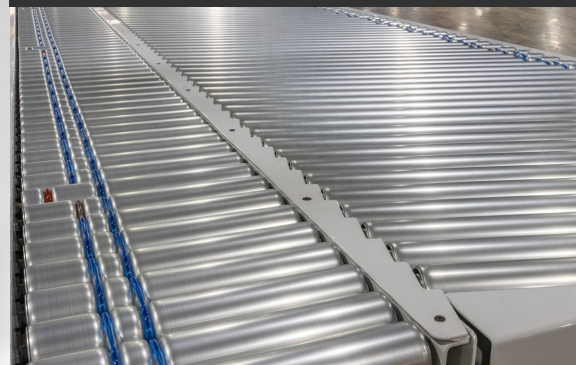
- Quick Deploy Modular Design
- 24vdc Brushless Motor System
- 36" | 48" BF
- E-stops Optional
- 150 ft/m | 50 lbs/ft



90° Curves & 45° Curves



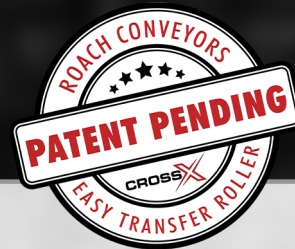
Skews, Herringbones, & Inclines





# CROSS

Easy Transfer Roller



- Replaces any Brand 1.9" O.D. Grooved Roller
- Installs into any Brand Frame with No Modifications
- Reduces Manual Push Fatigue up to 75%
- 36" & 48" | BF

EASILY CONVERT ROLLER SECTIONS



TO TRANSVERSE PUSH SECTIONS





## Product Catalog



[RoachConveyors.com/catalog](https://RoachConveyors.com/catalog)