

MODEL 700SBF

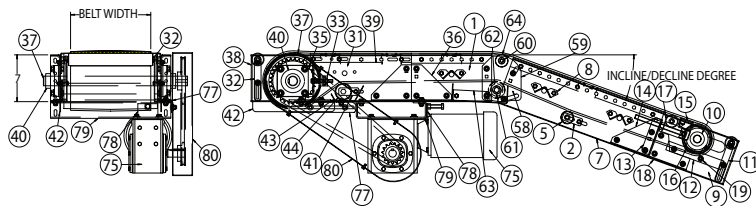
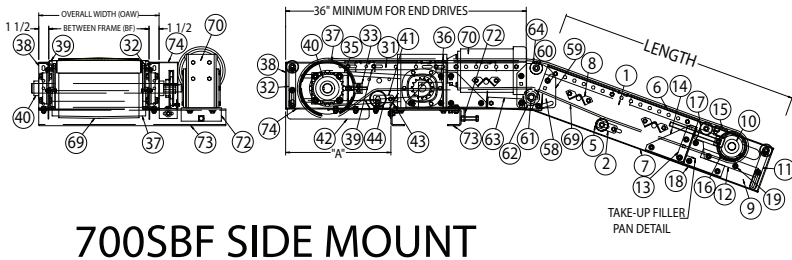
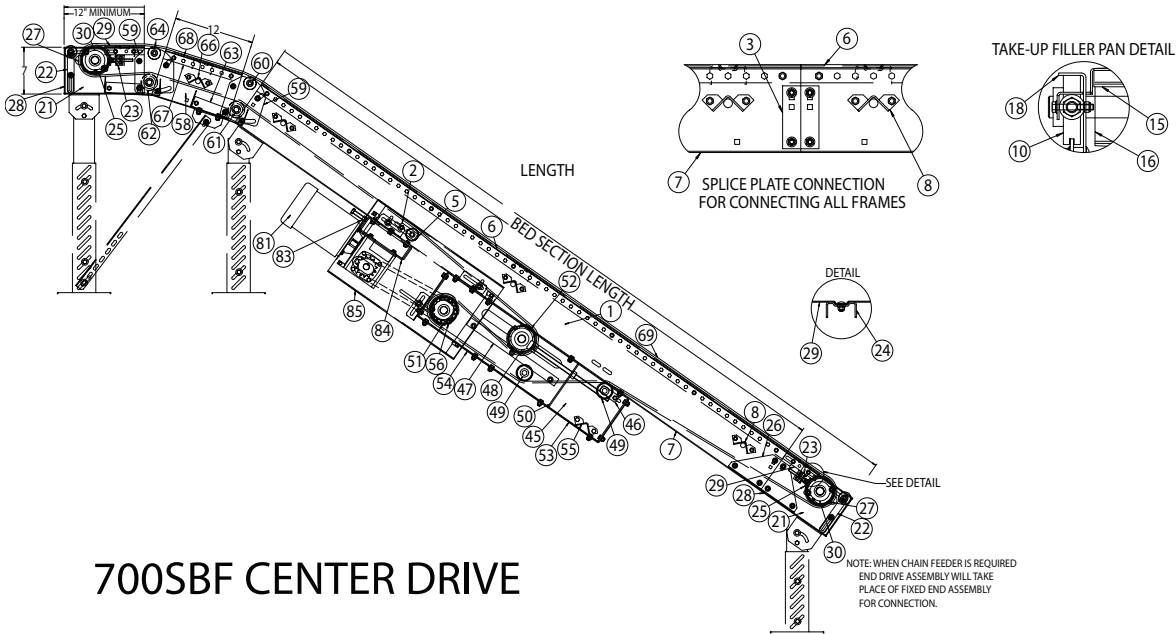
PARTS LIST

Item #	Description	Item #	Description
1	700Sb intermediate bed assembly	22	Safety pop-out roller assembly
2	1.9 roller keeper	23	Bearing take-up mounting angle
3	Splice plate	24	Bed pan brace (27" BF and above)
4	Bed pan brace (27" and above)	25	Bearing push plate
5	196S roller assembly	26	Bed joint mounting angle
6	Slider bed pan	27	6" idler pulley assembly
7	Medium duty side channel 12"-120"	28	6" fixed & end drive plate (LH/RH)
8	Frame crossbrace	29	Filler pan
9	4" end take-up assembly	30	4 Hole flange bearing w/1-7/16" bore
10	Take-up bearing assembly	31	4" end drive assembly
11	Safety pop-out roller assembly	32	Safety pop-out roller assembly
12	4" take-up bearing guide	33	Bearing take-up mounting angle
13	Bolt-in butt coupling	34	Bed pan brace (27" BF and above)
14	4" take-up bed joint mounting angle (LH/RH)	35	Bearing push plate
15	4" take-up filler pan assembly	36	Bed joint mounting angle
16	4" idler pulley assembly	37	4" drive pulley assembly
17	196S roller assembly	38	4" fixed and end drive plate (LH/RH)
18	4" take-up plate (LH/RH)	39	filler pan
19	Bearing guide spacer	40	2 hole flange bearing w/1-3/16" bore
9	6" end take-up assembly	31	6" drive end assembly
10	Take-up bearing assembly	32	Safety pop-out roller assembly
11	Safety pop-out roller assembly	33	Bearing take-up mounting angle
12	6" take-up bearing guide	34	Bed pan brace (27" BF and above)
13	Bolt-in butt coupling	35	Bearing push plate
14	6" take-up bed joint mounting angle (LH/RH)	36	Bed joint mounting angle
15	6" take-up filler pan assembly	37	6" drive pulley assembly
16	6" idler pulley assembly	38	6" fixed and end drive plate (LH/RH)
17	196S roller assembly	39	filler pan
18	6" take-up plate (LH/RH)	40	4 hole flange bearing w/1-7/16" bore
19	Bearing guide spacer	31	8" end drive assembly
20	Top take-up bearing guide	32	Safety pop-out roller assembly
21	4" fixed end assembly	33	Bearing take-up mounting angle
22	Safety pop-out roller assembly	34	Bed pan brace (27" BF and above)
23	Bearing take-up mounting angle	35	Bearing push plate
24	Bed pan brace (27" BF and above)	36	Bed joint mounting angle
25	Bearing push plate	37	8" drive pulley assembly
26	Bed joint mounting angle	38	8" fixed & end drive plate (LH/RH)
27	4" idler pulley assembly	39	Filler pan
28	4" fixed & end drive plate (LH/RH)	40	4 hole flange bearing w/1-7/16" bore
29	Filler pan	41	2.5 roller keeper
30	2 Hole flange bearing w/1-3/16" bore	42	Belt Guard (LH/RH)
21	6" fixed end assembly	43	Snub roller belt guard
		44	251S roller assembly

MODEL 700SBF

PARTS LIST

Item #	Description	Item #	Description
45	4" center drive assembly	51	12" drive pulley
46	2.5 roller keeper	52	6" or 8" idler pulley assembly
47	center drive take-up bearing guide	53	12" center drive belt guard
48	(Milled) take-up bearing assembly (LH/RH)	54	12" center drive belt guard
49	251S roller assembly	55	Frame crossbrace
50	4" center drive plate weld assembly (LH/RH)	56	4 hole flange bearing w/1-15/16" bore
51	4" drive pulley assembly	57	3 hole flange bearing w/1-3/16" bore
52	4" Idler pulley assembly	58	Single noseover assembly
53	4" center drive belt guard	59	Noseover plate
54	4" center drive belt guard	60	7/16" hex washer
55	Frame crossbrace	61	11/16" hex washer
56	3 hole flange bearing w/1-3/16" bore	62	251S roller assembly
45	8" center drive assembly	63	Snub roller guard
46	2.5 roller keeper	64	196S roller assembly
47	center drive take-up bearing guide	58	Double noseover assembly
48	(Milled) take-up bearing assembly (LH/RH)	59	Noseover plate
49	251S roller assembly	60	7/16" hex washer
50	8" center drive plate weld assembly (LH/RH)	61	11/16" hex washer
51	8" drive pulley assembly	62	251S roller assembly
52	4" Idler pulley assembly	63	Snub roller guard
53	8" center drive belt guard	64	196S roller assembly
54	8" center drive belt guard	65	Bed pan brace (27" BF and above)
55	Frame crossbrace	66	Frame crossbrace
56	4 hole flange bearing w/1-7/16" bore	67	Slider bed pan
45	12" center drive assembly w/4" take-up pulley	68	Side channel 12" long
46	Bearing push plate (LH/RH)	69	Belting assembly
47	Center drive take-up bearing guide	70	Sidemount drive kit
48	(Milled) take-up bearing assembly (LH/RH)	71	Motorbase stiffener assembly
49	4" idler (snub) pulley assembly	72	Reducer push plate assembly
50	12" center drive plate weld assembly (LH/RH)	73	Sidemount motorbase plate
51	12" drive pulley	74	Sidemount chain guard assembly
52	4" idler pulley assembly	75	End drive kit
53	12" center drive belt guard	76	Motorbase stiffener assembly
54	12" center drive belt guard	77	Chain guard angle mount (LH/RH)
55	Frame crossbrace	78	Reducer push plate assembly
56	4 hole flange bearing w/1-15/16" bore	79	Underneath motorbase plate
57	3 hole flange bearing w/1-3/16" bore	80	Chain guard assembly
45	12" center drive assembly w/6" or 8" take-up pulley	81	Center drive kit
46	Bearing push plate (LH/RH)	82	Motorbase stiffener assembly
47	Center drive take-up bearing guide	83	Reducer push plate assembly
48	Take-up bearing assembly	84	Underneath motorbase plate
49	4" idler (snub) pulley assembly	85	Center drive chain guard assembly
50	12" center drive plate weld assembly (LH/RH)		



Specify **Unit Serial Number** when ordering replacement parts to ensure proper allocation of components. **Recommended Spare Parts are shown in red.** Charted are item numbers and part descriptions. When ordering use example below.

Example: Need a replacement Center drive kit for 700SBF

Part No: SN 123456 - 81 - Center drive kit



ROACH CONVEYORS
808 HIGHWAY 463
TRUMANN, AR 72472
TEL. 870-483-7631

SERIAL NO. 123456